



# Vaughan®

## Vaughan E Series Chopper Pump PERFORMANCE CURVE

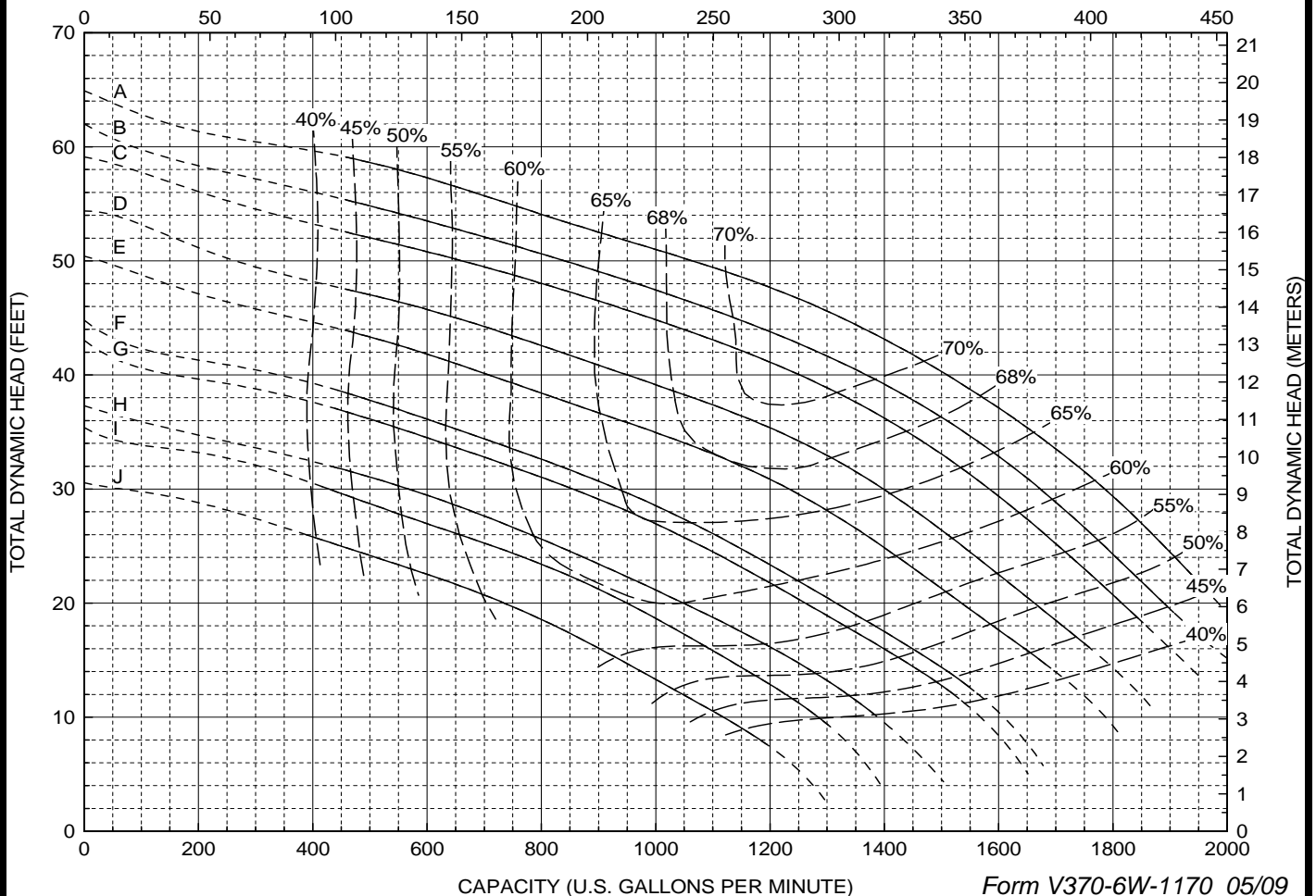
**Models:  
HE6W8  
PE6W8**

**Back-Pull-Out Casing  
4-Blade Impeller  
6" Discharge  
8" Suction**

CURVE	POWER (HP)	SPEED (RPM)	IMPELLER DIAMETER
A	25	1180	11.80" (300 mm)
B	25	1180	11.50" (292 mm)
C	20	1180	11.30" (287 mm)
D	20	1180	10.90" (277 mm)
E	15	1180	10.50" (267 mm)
F	15	1180	10.00" (254 mm)
G	15	1180	9.80" (249 mm)
H	10	1170	9.40" (239 mm)
I	10	1170	9.20" (234 mm)
J	7.5	1175	8.80" (224 mm)

DO NOT OPERATE PUMP IN DOTTED PORTION OF CURVES. CURVES SUBJECT TO CHANGE WITHOUT NOTICE. EFFICIENCIES SHOWN ARE NOMINAL BOWL. GUARANTIED MINIMUM EFFICIENCIES PER H.I. LEVEL B. CURVES ARE BASED ON PREMIUM EFFICIENT TEFC MOTOR SPEEDS.

CAPACITY (CUBIC METERS PER HOUR)



Form V370-6W-1170 05/09



# Vaughan®

## Vaughan E Series Chopper Pump PERFORMANCE CURVE

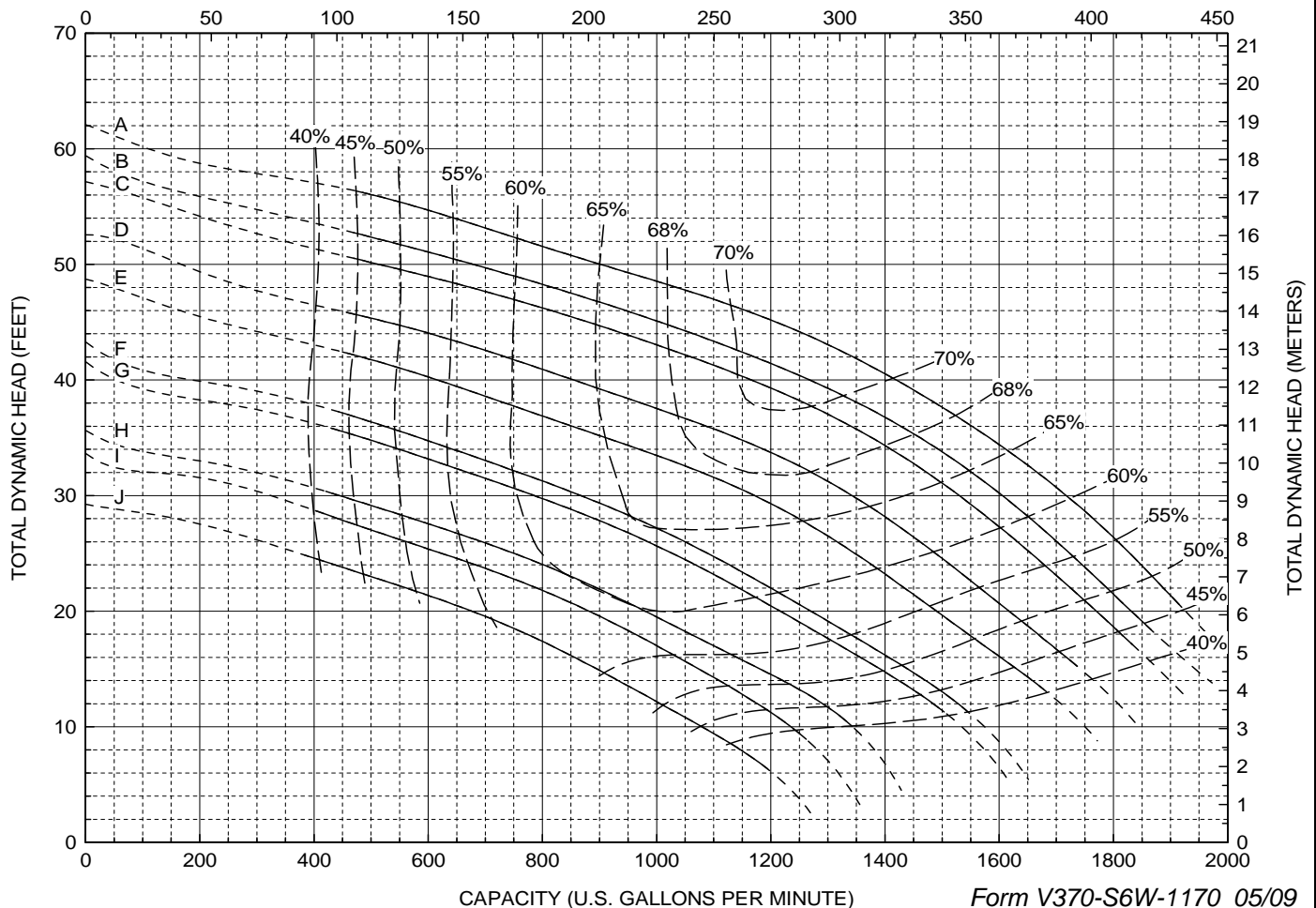
**Models:  
SE6W  
S6W**

**Back-Pull-Out Casing  
4-Blade Impeller  
6" Discharge**

CURVE	POWER (HP)	SPEED (RPM)	IMPELLER DIAMETER
A	25	1155	11.80" (300 mm)
B	25	1155	11.50" (292 mm)
C	20	1160	11.30" (287 mm)
D	20	1160	10.90" (277 mm)
E	15	1160	10.50" (267 mm)
F	15	1160	10.00" (254 mm)
G	15	1160	9.80" (249 mm)
H	10	1140	9.40" (239 mm)
I	10	1140	9.20" (234 mm)
J	7.5	1150	8.80" (224 mm)

DO NOT OPERATE PUMP IN DOTTED PORTION OF CURVES. CURVES SUBJECT TO CHANGE WITHOUT NOTICE. EFFICIENCIES SHOWN ARE NOMINAL BOWL. GUARANTIED MINIMUM EFFICIENCIES PER H.I. LEVEL B. CURVES ARE BASED ON SUBMERSIBLE MOTOR SPEEDS.

CAPACITY (CUBIC METERS PER HOUR)



CAPACITY (U.S. GALLONS PER MINUTE)

Form V370-S6W-1170 05/09