



Vaughan E Series Chopper Pump PERFORMANCE CURVE

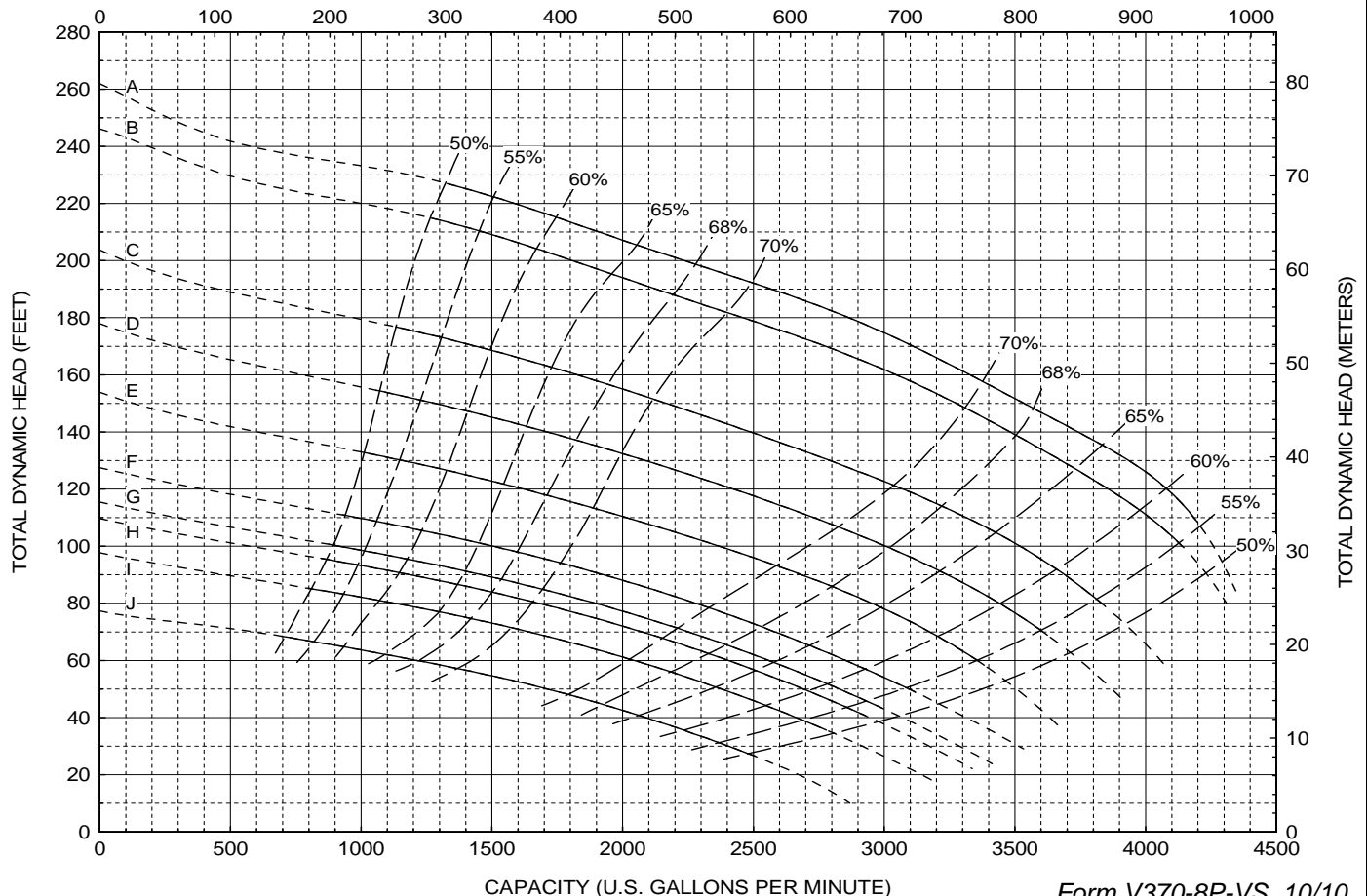
Models:
HE8P10
PE8P10
SE8P
V8P

Back-Pull-Out Casing
4-Blade Impeller
8" Discharge
10" Suction
 Variable Speed Curve

CURVE	POWER (HP/KW)	SPEED (RPM)	IMPELLER DIAMETER
A	250/185*	1785	15.00" (381 mm)
B	200/150	1730	15.00" (381 mm)
C	150/110	1570	15.00" (381 mm)
D	125 / 90	1470	15.00" (381 mm)
E	100 / 75	1365	15.00" (381 mm)
F	75 / 55	1245	15.00" (381 mm)
G	75 / 55**	1185	15.00" (381 mm)
H	60 / 45	1155	15.00" (381 mm)
I	50 / 37	1090	15.00" (381 mm)
J	40 / 30	970	15.00" (381 mm)

DO NOT OPERATE PUMP IN DOTTED PORTION OF CURVES. CURVES SUBJECT TO CHANGE WITHOUT NOTICE. EFFICIENCIES SHOWN ARE NOMINAL. GUARANTEED MINIMUM EFFICIENCIES PER H.I. LEVEL B. *EXCEEDS 200 HP AFTER 3650 GPM. **EXCEEDS 60 HP AFTER 2700 GPM.

CAPACITY (CUBIC METERS PER HOUR)



CAPACITY (U.S. GALLONS PER MINUTE)